

CRP Flex-Rite Product Specification

Tef-Rite Con WA

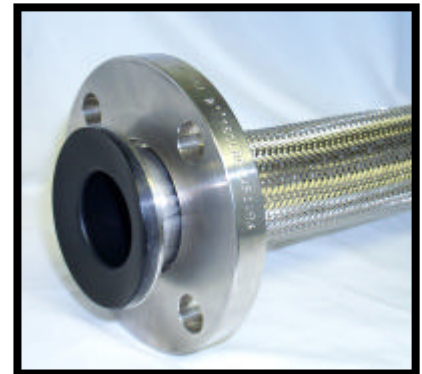


A helically convoluted PTFE hose, which is self draining and offers easy cleaning, good flexibility and high vacuum resistance. Ideal for steam applications or where a high vacuum hose is required.

- Description** Convoluted Static-Dissipating, Wire Reinforced PTFE Hose
- Liner** Black, static-dissipating, convoluted bore, extruded PTFE
- Construction** Stainless steel support wire
- Cover** Stainless steel wire braid
- Terminations** Flex-Rite Series 7000 permanently attached couplings
- Approvals** FDA CFR 21 177.2600, USP XXI Class VI

Features

- Smooth non-stick internal bore minimizes product hold up
- Excellent mechanical resistance for vibration and flexing applications
- Fluoropolymer Lining (Teflon) provides outstanding chemical resistance
- Suitable for suction (vacuum) duty
- Detergent or Caustic (CIP) cleanable
- Steam cleanable (short duration) SIP



Virgin PTFE shown for illustrative purposes only

Dimensions											
Hose Part Number	Bore Diameter				Wall		Outside		Min Bend Radius	Wt	Max Lgth
	Nominal		Min	Max	Nom	Tol	Min	Max			
	in	mm	mm	mm	mm	±mm	mm	mm	mm	kg/m	m
7120	½	13	11.6	13.6	0.8	0.1	18	20	25	0.2	30
7120	1	25	24.5	25.5	1.1	0.1	34	38	85	0.9	20
7120	1½	40	36.5	37.5	1.4	0.1	47	50	120	1.7	20
7120	2	50	49.5	50.5	1.5	0.2	61	67	165	2.6	20
7120	3	75	73.5	74.5	1.6	0.2	90	100	260	4.7	15
7120	4	100	94.5	99.5	1.8	0.2	121	128	400	5.6	15

Hose Assemblies

These hose assemblies are manufactured with a fully welded hose ferrule and coupling, providing a rugged design for maximum service life

Products are accompanied by a certificate of compliance and test to EN10204 Type 2.2.

CRP Flex-Rite supply the complete range of hygienic fittings including RJT, IDF/ISS, DIN, SMS and Tri-Clamp and general industry standard hose fittings. We also have extensive experience in the manufacture of special fittings to suit specific customer requirements.

Properties at Ambient Temperature							
Nominal		Working Temp		Working Pressure	Vacuum Rating	Hydrotest Pressure	Min Burst Pressure
in	mm	Min °C	Max °C	bar (g)	bar (g)	bar (g)	bar (g)
½	13	-70	260	35	-0.8	20	170
1	25	-70	260	40	-0.8	20	210
1½	40	-70	260	40	-0.8	20	175
2	50	-70	260	25	-0.8	20	135
3	75	-70	260	12	-0.8	20	65
4	100	-70	260	10	-0.8	20	40

Hoses may on request be supplied with higher working and test pressures

Options

- Recognition/External Smoothing - Heat shrink PVC in various colours.
- Sight Glass - In-line Non-Glass Sight Glass incorporated into hose assembly.
- End Protection - Rubber nut protection rings.
- Special Couplings - 45° and 90° Elbows, Valves, Quick release couplings.

Simple Performance Guide			
Working Environment	Severe	Normal	Light
			✓
Construction Weight	Heavy	Medium	Light
		✓	
Flexibility	Limited	Standard	High
		✓	

CRP Flex-Rite Limited

Hose & Couplings Division
 19 The Trinity Centre
 Park Farm Industrial Estate
 Wellingborough NN8 6ZB
 Phone: +44(0)1933 673699
 Fax: +44(0)1933 675819

UK Northern Sales
 Todmorden Road
 Littleborough OL15 9EG
 Phone: +44(0)1706 756400
 Fax: +44(0)1706 379567

Email: enquiry@crpflexrite.com
 Website: www.crpflexrite.com

Teflon