

**Central Sales and Manufacturing**

Tel: +44 (0) 1933 673699 fax: +44 (0) 1933 675819  
19 The Trinity Centre  
Park Farm Industrial Estate,  
Wellingborough, NN8 6ZB

**Northern Service Centre**

Tel: +44 (0) 1706 756400 Fax: +44 (0) 1706 379567  
Todmorden Road,  
Littleborough,  
OL15 9EG

## Sight Glass

### Superview Vessel Level Indicator Chemical Application Part Lined

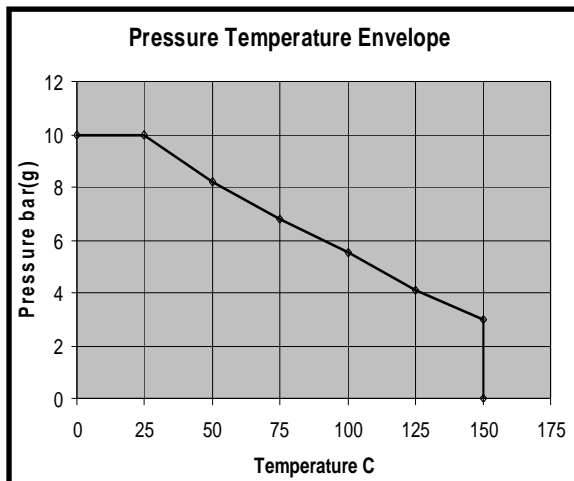
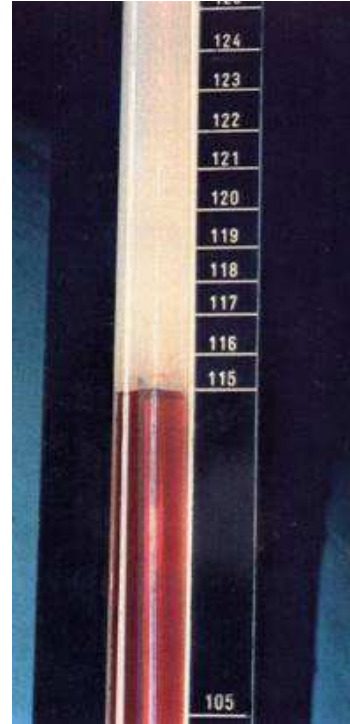
**Description:** The LGSG is constructed from an outer stainless steel support tube with an inner FEP transparent tube. This non-glass construction gives a shatterproof sight glass for use with highly corrosive media and is supplied typically with ASME or DIN flanges.

**Note:** \*Indicative only. Exact minimum and maximum dimensions depends upon the fittings used

**Approvals:** FDA

**Features:**

- Shatterproof sight tube for maximum safety
- Uses the Series 7000 swaging system for crevice free fittings connection
- Length to suit customer requirements
- Strong robust design



Dimensions					
Inches	DN mm	Id mm	Standard Wall Thickness	Minimum length*	Maximum length*
1/2	15	12.5	2.5	100	6000
3/4	20	19.1	3.2	100	6000
1	25	21.7	3.2	100	6000
1 1/2	40	34.4	3.2	100	6000
2	50	47.1	3.2	100	6000

**Options :**

- 1) Fittings—ASME B16.5 Class 150 flanges, PN10/16 flanges, BS10 table D/E, BSP threaded ends.
- 2) Fittings—Straight, stainless steel elbows: Fixed/Rotating 90°. Manipulated FEP elbows.
- 3) Fittings—Hastelloy C22, C276.
- 4) Flanged—can be lined with FEP to all wetted surfaces.
- 5) Rear Support—Stainless steel backing board.
- 6) Viewing—Hollow ball indicator, lamps.
- 7) Guarding—None, slotted stainless steel (not available on version with manipulated FEP elbows), Perspex shield.
- 8) Scales—(Reflective, trafoflyte) graduated to customer requirements.
- 9) Tube—Standard or heavy wall FEP tube