

Leaders in Flexible Transfer Solutions

Central Sales and Manufacturing

Tel: +44 (0) 1933 673699 fax: +44 (0) 1933 675819
19 The Trinity Centre
Park Farm Industrial Estate,
Wellingborough, NN8 6ZB

Northern Service Centre

Tel: +44 (0) 1706 756400 Fax: +44 (0) 1706 379567
Todmorden Road,
Littleborough,
OL15 9EG

Superview Vessel Level Indicator Hygienic Application

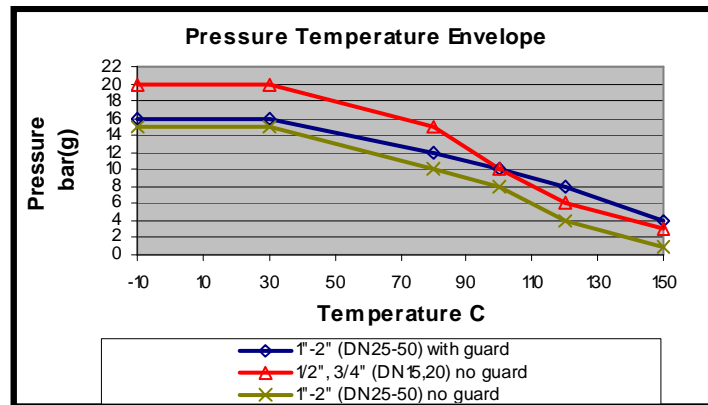
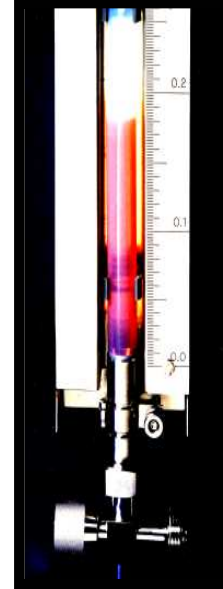
Description: The VLIH is a non glass vessel level indicator. The construction used a transparent tube and swaged hygienic stainless steel fittings.

Note : *Indicative length only. Exact minimum and maximum dimensions depend upon the end fittings used.

Approvals: FDA

Features:

- Shatterproof sight tube for maximum safety
- Materials of construction suitable for hygienic use
- Uses the Series 7000 swaging system for crevice free fittings connection
- Length to suit customer requirements



Dimensions					
NB inches	DN mm	Id mm	Standard Wall	Minimum Length*	Maximum Length*
1/2	15	12.7	2.5	100	6000
3/4	20	19.1	3.2	100	6000
1	25	21.7	3.2	100	6000
1 1/2	40	34.4	3.2	100	6000
2	50	47.1	3.2	100	6000

Options :

- 1) Fittings—Hygienic end connections RJT, IDF/ISS, DIN, SMS, Tri-clamp etc., Elbows—fixed to rotating
- 2) Fittings—Straight, stainless steel elbows: Flex/Rotating, 90° Manipulated FEP elbows.
- 3) Fittings—Hastelloy C22, C276.
- 4) Rear Support—Stainless steel backing board.
- 5) Viewing—Hollow ball indicator, lamps.
- 6) Guarding—None, slotted stainless steel (not available on version with manipulated FEP elbows), Perspex shield.
- 7) Scales—(Reflective, traffolyte) graduated to customer requirements.
- 8) Sight Tube—Standard or Heavy Wall FEP tube

Website : www.flexritechemgiene.com

E-mail: enquiry@flexritechemgiene.com

Telephone: +44 (0) 1933 673699